

An Energy Efficient Optimal Routing Method for Wireless Sensor Networks

¹B.P.S. Sahoo, ²Deepak Puthal, ³Satyajit Rath

¹Department of Computer Science and Information Engineering, National Central University, Taiwan (R. O. C.)

²Department of Computer Science and Engineering, National Institute of Technology Silchar, India

³CN&e-M Division, CSIR-Institute of Minerals and Materials Technology, India

¹biswap.singh@gmail.com, ²deepak.puthal@gmail.com, ³satyajitrath@gmail.com

ABSTRACT

In general, sensor nodes are deployed in left unattended area. In such situation feeding energy to the batteries or replacing the batteries are difficult or even sometimes impossible too. In this manner, delaying the system lifetime is a paramount advancement objective in this viewpoint. In this paper, we propose a new Energy-efficient Data centric Routing protocol called DRUG. An adaptive data driven methodology, to discover an ideal optimal way from source to sink has been proposed, when the sensor nodes are deployed randomly in a limited service area with a single sink. Using the NS-2 Simulator, we compare the performance of DRUG with FLOODING and SPIN protocol.

Keywords: *Energy Efficiency, Routing Protocol, Wireless Sensor Network*

1. INTRODUCTION

In recent times, the increase in the low cost sensor node design and flexibility has led to an increase in the development of and the demand for rich wireless sensor network (WSN) applications [1, 2]. Efficient design and implementation of WSNs has become a hot area of research in recent years. By networking a large number of tiny sensor nodes, it is possible to obtain real-time data about any physical phenomena, which were difficult or impossible to obtain in conventional ways of networking. Hence a typical WSNs application is combined different software and hardware module to sense the physical data, processing data and communicates those data to a remote site or base station through multiple hops or nodes. Sometimes, instead of sending the raw data to the nodes responsible for the fusion, they use their processing abilities to locally carry out simple computations and transmit only the required and partially processed data [3] [15].

In WSNs, energy is one of the major issues, which need to be carefully consumed by the sensor nodes to maximize the network lifetime. Hence, most of the current researchers are engaged to devise a way to minimize the energy consumption in the network to maximize the network lifetime. Generally the sensor nodes in order are powered by small batteries which are incapable to power for a long period. Typically, the sensors nodes are deployed in a left unattended area. So, it is quite difficult to replace the battery frequently and even sometimes not possible. Therefore, prolonging the network lifetime is an important optimization goal in this aspect. The secret to reduce energy consumption lies in power aware designing of each layer of the system and number of message transmission for data packet. As a consequence, the reduction of number of message transmission can reflect in energy usage of the nodes. The WSNs suffer from several constraints and challenges; some of those are: limited onboard memory and limited processing capability of the sensor nodes, limited communication bandwidth, frequent death of sensor nodes, link failure, mobility in

sensor, heavy traffic through some particular nodes etc. In a multi-hop ad hoc sensor network, each node plays the twins role of data originator and data router. The failure of few nodes may lead to topological changes and hence require rerouting of the data packets.

To resolve the issue of excess energy consumption, many energy-efficient protocols have been proposed to reduce energy consumption such as S-MAC [4], LEACH [5], CLEEP [6], SPIN [7] and etc. Many MAC protocols have been focused to avoid the collision between two nodes and minimizing the idle listening; but ignore the route discovery and maintenance issues. Hence, the literal challenging task, do not fulfill, which in turn results inefficient energy consumption.

This paper introduces a novel adaptive approach to find an optimal routing path from source to sink when the sensor nodes are randomly deployed in a restricted service area with single sink. This also aggregates the data in intermediate node to reduce the duplicate data. Data centric protocols more focus on data rather than the address of the destination. Here our approach focuses on both data as well as the destination address. The proposed protocol is hierarchical in nature. As all packets are following optimal path to sink node network conjunction is one of the major concern over her. To avoid this problem D. Puthal et.al proposed cross-layer architecture for conjunction control [11]. This architecture for vehicular ad-hoc networks but it can be applicable in the sensor networks with simple modification. The work looks at a unique approach for a scalable and energy efficient solution. The proposed protocol has been evaluated by performance analysis with the existing protocol FLOODING and SPIN.

The rest of the paper is organized as follows: Section 2 mentions some related works. Section 3, describes the MAC layer related properties. Section 4 mention the energy consumption model followed by Section 5, describes the proposed protocol in detail.

Section 6 presents the simulation results and Section 7 summarizes the paper with a conclusion of the work.

2. RELATED WORK

Limited energy resources of sensor nodes endlessly insist the researchers to work for new algorithms and schemes to prolong the lifetime of the network. Thus energy efficient strategies have been focused in each layer of protocol design in network. Although these protocols have achieved a good level of performance in their respective layers, but they usually ignores the impact of other layers on their performance, which in turns inefficient in its integrated implementation. Integrating GPS, GSM and Cellular Phone for Location Tracking and Monitoring in [16].

One indicated approach to adaptively adjust the transmission power to an appropriate level for generating signal strength, just enough to reach the next hop destination, is to control the power consumption rate of a sensor node and thus to reduce the collision probability [8]. The S-MAC [4] protocol used a low power RTS-CTS protocol periodically sleeps, wakes up, listens to the channel, and then returns to sleep [1], hence addresses collision problem in network. In MAC layer, the major sources of energy waste in wireless sensor networks like collision, overhearing, control-packet overhead, idle listening and over emitting should be minimize to prevent the energy wastes [2]. The AC-MAC/DPM [9] introduced Dynamic Power Management (DPM) mechanism into ACMAC to reduce the energy consumption due to the transceiver state switches between idle and sleep. The Sift [10] addresses the issue of when multiple nodes in the same neighborhood all sense an event they need to transmit information about and a subset of the nodes that observe the same event report it. P-MAC adaptively determines the sleep-wake up schedules for a node based on its own traffic, and the traffic patterns of its neighbors [5]. Routing in WSNs is very challenging issue due to inherent characteristics that distinguish the WSNs from other wireless networks like mobile ad hoc networks or cellular networks [8]. The sensor network adopts two basic schemes for energy savings in network layer such as [3]: Power-Aware Routing and Maximum Lifetime Routing. The main aim at the network layer is to find the route to transmit data from sensor nodes to the sink in an energy-efficient and reliable manner in order to maximally extend the lifetime of the network. The SPIN [7], an adaptive protocol that disseminate all the information from each node to every node in the sensor network. The SPIN family of protocols uses data negotiation and resource-adaptive algorithms. SPIN protocol delivers 60% more data with consuming same amount of energy as flooding [7].

In recent years, many protocols also have been designed to provide energy-efficient cross layer mechanism such as Energy Aware Adaptive Low Power Listening (EA-ALPL), Cross-Layer Optimization, and Cross-Layer Scheduling. In comparison, our approach promotes a better performance as compare when with flooding and LEACH [5] protocols.

3. MAC LAYER RELATED PROPERTIES OF WSNs

3.1 Reason of Energy Wastes

The sensor nodes are generally disposed when they are out of battery. So Maximizing the network lifetime is a major question of sensor network design. The implemented MAC protocol should reduce the potential energy wastes. The common reasons of energy wastes found are:

- Idle Listening: It is one of the major sources of energy waste. When a node listens to an idle channel to receive possible traffic, It is called idle listening.
- Collision: When a receiver node receives more than one packet at the same time, these packets are called collided packets even when they coincide partially. All packets that cause the collision have to be discarded and the re-transmissions of these packets are required which increase the energy consumption. Although some packets could be recovered by a capture effect, a number of requirements have to be achieved for its success.
- Overhearing: Overhearing happens a node receives packets that are destined to other nodes.
- Control packet overhead: The third energy waste occurs as a result of control packet overhead. Minimal number of control packets should be used to make a data transmission.
- Over emitting: It is caused by the transmission of a message when the destination node is not ready.

3.2 Communication Patterns in WSNs

Three types of communication patterns are seen in wireless sensor networks broadcast, converge cast, and local gossip. Broadcast type of communication pattern is generally used by a base station (sink) to transmit some information to all sensor nodes of the network. The event triggered sensors communicate with each other locally. This kind of communication pattern is called local gossip, where a sensor sends a message to its neighboring nodes within a range. The sensors that detect the event, then, need to send what they perceive to the information center. That communication pattern is called converge cast, where a group of sensors communicate to a specific sensor. The common features of communication patterns are:

- Little activity in lengthy period
- Intensive traffic in short time
- Highly correlated traffic
- End to end flows are required to be fair

4. ENERGY CONSUMPTION MODEL

In WSNs, the operation time of individual sensor node greatly influence the whole lifetime of the network. Therefore, a model, which defines the amount of power consumed in each action of a sensor node, influences the lifetime of networks to a great degree. In proposed work,

<http://www.ejournalofscience.org>

we assume a model where the radio dissipates $E_{elec} = 50\text{ nJ/bit}$ to run the transmitter or receiver circuitry and $\epsilon_{amp} = 100\text{ pJ/bit/m}^2$ for the transmit amplifier to achieve an acceptable E_b/N_0 [7] [14]. The power needed to transmit k bits of data over a distance d is:

$$E_{tx} = E_{elec}k + \epsilon_{amp} kd^2 \quad (1)$$

And the power needed to receive k bits of data is:

$$E_{rx} = E_{elec}k \quad (2)$$

Where, d is the distance between the source and sink. Using a direct communication protocol, each sensor sends its data directly to the base station. If the base station is far away from the nodes, direct communication will require a large amount of transmit power from each node. This will quickly drain the battery of the nodes and in turn reduce the network lifetime. Nodes route their packets to the base station through intermediate nodes. Thus nodes act as routers for other nodes in addition to sense the environment. The existing routing protocols consider the energy of the transmitter and neglect the energy dissipation of the receiver in determining the routes in equation 2.

Depending on the relative costs of the transmit amplifier and the radio electronics, the total energy expended in the system might be greater in multi-hop transmission than direct transmission to the base station. Assume that there are n numbers of intermediate nodes to reach at the destination and also each adjacency nodes are differentiated with distance r between them. So, the total distance between sources to sink is nr . If we consider the energy expenditure at each node during transmitting a single k -bit message from source node N to base station. A node located with a distance from the base station using the direct communication approach is in equations 1 and 2, then from equation 1.

$$\begin{aligned} E_{direct} &= E_{tx}(k; d = n * r) \\ &= E_{elec} * k + \epsilon_{amp} * k * (nr)^2 \\ &= k(E_{elec} + \epsilon_{amp} n^2 r^2) \end{aligned} \quad (3)$$

Packet passes through the n intermediate nodes to reach at the destinations means it required n times transmit and $n - 1$ times receive. From equation (2)

$$E_{rx} = (n - 1)E_{elec}k \quad (4)$$

So total energy conservation to reach at the destination is

$$\begin{aligned} E &= n(E_{elec} * k + \epsilon_{amp} * k * r^2) + (n - 1)E_{rx} \\ &= E_{elec} * k * n + \epsilon_{amp} * k * n * r^2 + (n - 1)E_{elec}k \\ &= k((2n - 1)E_{elec} + \epsilon_{amp} nr^2) \end{aligned} \quad (5)$$

In the direct communication with base station the energy conservation is

$$\begin{aligned} E &= E_{tx} + E_{rx} \\ &= E_{elec}k + \epsilon_{amp} kd^2 + E_{elec}k \end{aligned}$$

$$\begin{aligned} &= E_{elec}k + \epsilon_{amp} kr^2 + E_{elec}k \\ &= k(2E_{elec} + \epsilon_{amp} r^2) \end{aligned} \quad (6)$$

From the above equations the total energy at n hop distance from the source to sink is defined in equation 5 and for single hop communication in equation 6.

5. DRUG PROTOCOL DESIGN OVERVIEW

In this section, we have presented the new data centric protocol i.e. DRUG (Data centric RoUtinG) and described the working model. This protocol resets upon two basic ideas. First to operate efficiently and to conserve energy, sensor applications need to communicate with each other about the data that they already have and the data they still need to obtain. Exchanging sensor data may be an expensive network operation, but exchanging data about sensor data (say metadata) need not be. Second, nodes in a network must monitor and adapt to changes in their own energy resources to extend the operating lifetime of the system. This is the main feature of the DRUG protocol.

5.1 Application-level Control

Our design of the DRUG protocols is motivated in part by the principle of Application Level Framing (ALF) [2]. With ALF, network protocols must choose broadcast units that are significant to applications, i.e., packetization is best done in terms of Application Data Units (ADUs). One of the important components of ALF-based protocols is the common data naming between the transmission protocol and application, which we follow in the design of our meta-data [1]. We take ALF-like ideas one step further by arguing that routing decisions are also best made in application-controlled and application-specific ways, using knowledge of not just network topology but application data layout and the state of resources at each node. We believe that such integrated approaches to naming and routing are attractive to a large range of network situations, especially in mobile and wireless net-works of devices and sensors.

5.2 Meta-Data

Sensor use meta-data to represent the description about data collected by the sensor. If x is the meta-data description of sensor data X , then the size of x in bytes must be shorter than the size of X [1]. If different pieces of actual data are distinguishable, then their corresponding meta-data also is distinguishable. Likewise, two pieces of same data should share the same meta-data representation. It does not specify a format for meta-data; this for-mat is application-specific. For example, sensors that cover disjoint geographic regions may simply use their own unique IDs as meta-data [3] [15]. The meta-data x would then stand for "all the data gathered by sensor x ". By contrast, a camera sensor might use (x, y, Φ) as meta-data, where (x, y) is a geographic coordinate and Φ is an orientation. DRUG applications must take care to define a meta-data format for representing data that takes into account the costs of storing, retrieving, and managing the meta-data [1]. Finally, because each application's meta-

data format may be different, DRUG relies on each application to interpret and synthesize its own meta-data.

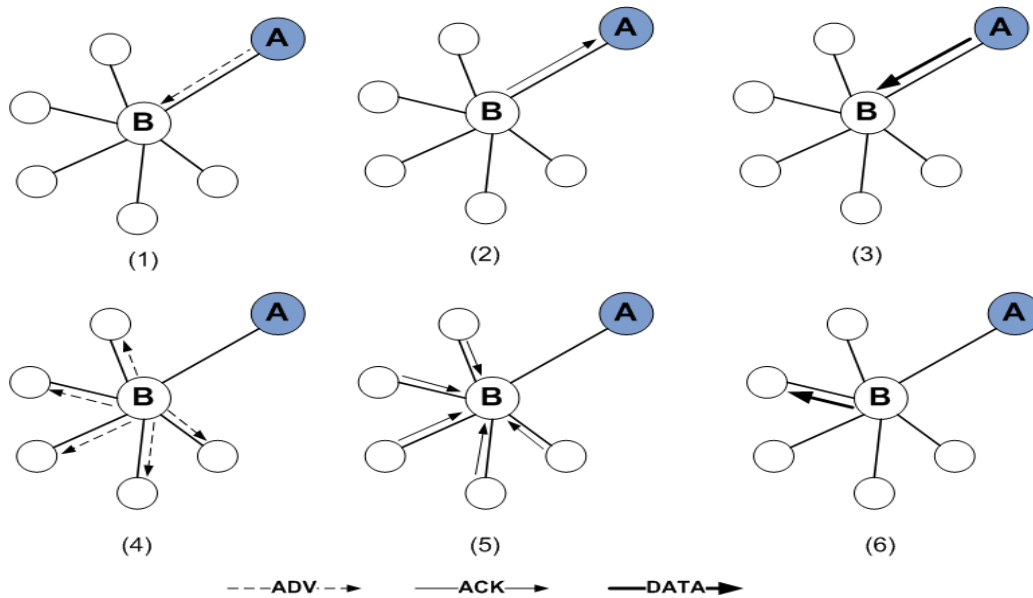


Fig 1: The DRUG protocol working model. The Node A starts by advertising its data to node B (1). Node B responds by sending a request to node A (2). After receiving the requested data (3), node B then sends out advertisements to its neighbors (4), who in turn send requests back to B (5-6).

Algorithm I: Network Initialization

Each node associates with largest integer value i.e ∞ .

$V[X]$ = associate value with the node X.

Q = Queue

1. $V[\text{sink}] = 0$.
2. $Q \leftarrow \text{Sink}$ (Assign the sink to the queue).
3. $X \leftarrow \text{De-queue}(Q)$.
4. Node(X) broadcast the ADV packet containing the associate integer value.
5. Node(Y) receive the ADV packet and check
 - a. If $V[Y] > V[X]$
 - b. $V[Y] = V[X] + 1$.
 - c. $Q \leftarrow Y$ (Node Y En-queue in to the queue)
 - d. End if
6. Continue to step.3 till Queue (Q) is empty.
7. If $|Q| \neq 0$
- Go to step.3
8. Else
- Exit (Network initialization completed)
- End if

5.3 DRUG Message

In our proposed designed, the DRUG protocol uses three types of messages to communicate between different nodes as shown in Figure 1, such as:

- ADV: new data advertisement. When a sensor node has data to share, it can advertise this fact by transmitting an ADV message containing meta-data.
- ACK: request for data. A SPIN node sends an ACK message when it wishes to receive data.

- DATA: data message. DATA messages contain actual sensor data with a meta-data header.

ADV and ACK messages contain only meta-data. In networks where the cost of sending and receiving a message is largely determined by the messages size, ADV and ACK messages will therefore be cheaper to transmit and receive than their corresponding DATA messages.

Algorithm II: Data Transmission from Source Node

ID(X) = ID of node X

$V[X]$ = value associated with node X

En(X) = Energy status at node X

En = Minimum energy level to participate in data transmission

1. B_Cast ADV(id(X), $V[X]$)
2. Node(Y) receive the ADV packet and check
 - a. If $V[Y] < V[X]$ AND $En(Y) \geq En$ then
 - b. ACK(Y) \rightarrow X
 - c. End if
3. DATA(X) \rightarrow Y
4. Node(Y), B_Cast ADV
5. Go to Step 3 till DATA packet reach at sink.

5.4 DRUG Resource Management

The applications of proposed DRUG protocols are resource aware, resource-adaptive and data centric like SPIN properties. They calculate the cost in terms of energy, of performing computations and sending and receiving data over the network. With this information, nodes can make informed decisions about using their resources effectively. Both the protocols follow the data

centric method. SPIN does not specify a particular energy management policy for its protocols. Rather, it specifies an interface that applications can use to probe their available resources [1]. DRUG protocol transmits data with three step process like SPIN but it transmit with unicast whereas SPIN transmit with multicast. Our proposed method takes care about the data centric as well as the address of sink node.

6. EXPERIMENT RESULTS

In this section we evaluate the performance result of the proposed protocol and compared with the existing SPIN protocol. The protocol has been analyzed and evaluated in NS2 simulator. Here we compared with SPIN protocol because; it is a standard protocol for the data centric transmission. To perform the test, we have taken 100 random sensor nodes in the 1000x1000 meter area. The Figure 2 shows the first node dies in the network with considering various technologies. In flooding the first node dies very quickly in the considering scenario because it floods the data packets to entire network in-order to deliver the data packets. Comparatively flooding, SPIN saves more energy and sends the data to the destination. It sends the data after establishes the path and follow the same path until it breaks.

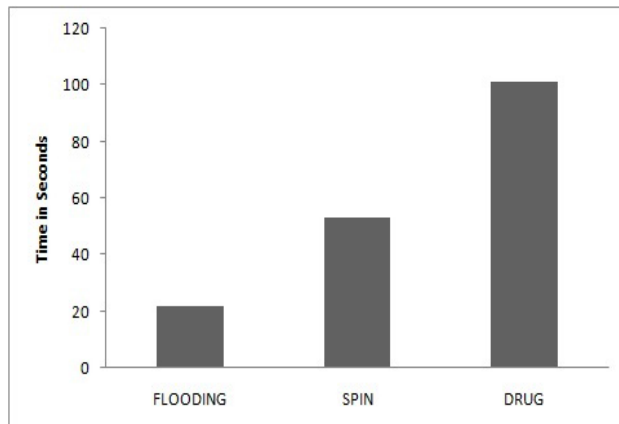


Fig 2: First node dies in the network.

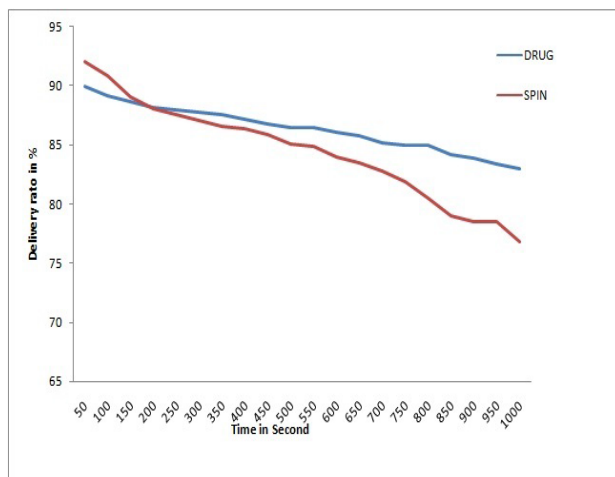


Fig 3: Delivery Ratio (%) Vs Time (Second).

In this way the node dies slowly. In the MSWSN model more energy saves and all nodes of the network are alive for long period of time. In the Figure 3 we have shown the delivery ratio between the SPIN and DRUG routing protocol. Initially in SPIN delivery ratio is higher than the SPIN because of their flooding nature of data transmission. As soon as node dies, delivery ratio decreases. In our proposed model delivery ratio performance is better than SIPN protocol.

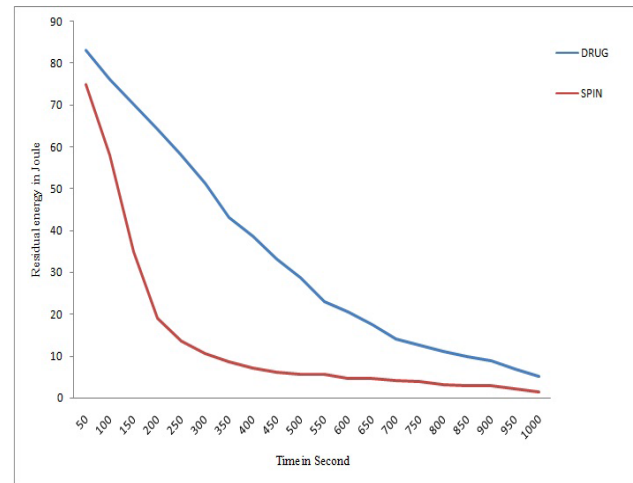


Fig 4: Residual Energy (Joule) Vs Time (Second).

In Figure 4, shows at initially of simulation residual energy of the network are very less in SPIN. The reason behind the drastic decrement of residual energy of the network is the broadcasting nature of the node. A large number of nodes die because of this reason and further the network becomes disconnected. In our proposed protocol DRUG data dissemination towards a single mode instead of multiple node and transmits with negotiation based in order to reach at the destination. When a node reduces its energy below threshold level, it is not going to participate in data transmission unlike SPIN property. Therefore the decrement in the residual energy becomes almost constant in the rest of the experiment. As a result the decrement of residue energy is smooth.

7. CONCLUSION

In this paper, a new energy-efficient data-centric routing protocol for wireless sensor networks is presented, named DRUG. The protocol is motivated in part by the principle of application level framing. We take ALF-like ideas one step further by arguing that routing decisions are also best made in application-controlled and application-specific ways, using knowledge of not just network topology but application data layout and the state of resources at each node. The results of analytical simulation experiment show that DRUG conserves more energy and leads to the better system performance.

<http://www.ejournalofscience.org>

REFERENCES

- [1] F. Akyildiz, W. Su, Y. Sankarasubramaniam, E. Cayirci A survey on sensor networks, *IEEE Communications Magazine*, 40(8), pp. 102-114, 2002.
- [2] Sahoo, B. P. S., Satyajit Rath, and Deepak Puthal. "Energy efficient protocols for wireless sensor networks: A survey and approach." *International Journal of Computer Applications*, vol. 44(18), pp. 43-48, (2012).
- [3] Puthal, Deepak. "Secure Data Collection and Critical Data Transmission Technique in Mobile Sink Wireless Sensor Networks." M.Tech Thesis, National Institute of Technology, Rourkela, 2012.
- [4] Wei Ye; Heidemann, J.; Estrin, D., An energy-efficient MAC protocol for wireless sensor networks, *Twenty-First Annual Joint Conference of the IEEE Computer and Communications Societies. Proceedings. IEEE*, vol.3, no., pp.1567,1576 vol.3, 2002.
- [5] Heinzelman, W.B.; Chandrakasan, A.P.; Balakrishnan, H.; , An application-specific protocol architecture for wireless microsensor networks, *IEEE Transactions on Wireless Communications*, vol.1, no.4, pp. 660- 670, Oct 2002
- [6] Shujuan Liu, Yuebin Bai, Mo Sha, Qingyuan Deng, Depei Qian, CLEEP: A Novel Cross-Layer Energy-Efficient Protocol for Wireless Sensor Networks, 4th International Conference on Wireless Communications, Networking and Mobile Computing, WiCOM 2008.
- [7] R.Heinzelman, A. Chandrakasan, H.Balakrishnan, Energy Efficient Communication Protocol for Wireless Microsensor Networks, *Proceedings of the 33rd Hawaii International Conference on System Sciences (HICSS00)*, Maui, HI, Jan. 2000.
- [8] Sotiris Nikolettseas, Algorithm for Wireless Sensor Networks: Design, Analysis and Experimental Evolution, in: the *Proceedings of 5th International Workshop, WEA 2006*, Cala Galdana, Menorce, Spain, May 2006, Springer.
- [9] Feng Li, Yun Li, Weiliang Zhao, Qianbin Chen, Weiwen Tang, An Adaptive Coordinated MAC Protocol Based on Dynamic Power Management for Wireless Sensor Networks, *IWCMC06, Proceedings*, ACM, July 36, 2006.
- [10] K. Jamieson, H. Balakrishnan, and Y. C. Tay, Sift: A MAC Protocol for Event-Driven Wireless Sensor Networks, *MIT Lab. Comp. Sci., Tech. rep.* 894, May 2003, Available at <http://www.lcs.mit.edu/publications/pubs/pdf/MIT-LCS-TR-894.pdf>
- [11] Puthal, Deepak, Zeeshan Hameed Mir, Fethi Filali, and Hamid Menouar. "Cross-layer architecture for congestion control in Vehicular Ad-hoc Networks." In *Connected Vehicles and Expo (ICCVE), 2013 International Conference on*, pp. 887-892. IEEE, 2013.
- [12] Nikolaos A. Pantazis, Dimitrios D. Vergados, A Survey on Power Control Issues in Wireless Sensor Networks, in *IEEE Communication Surveys, The Electronic Magazine of Original Peer-Reviewed Survey Articles*, 4th Quater, Volume 9, No. 4, 2007.
- [13] J. Kulik, W. R. Heinzelman, and H. Balakrishnan, Negotiation-based protocols for disseminating information in wireless sensor networks, *Wireless Networks*, Volume: 8, pp. 169-185, 2002.
- [14] Puthal, Deepak, Bibhudatta Sahoo, and Suraj Sharma. "Dynamic Model for Efficient Data Collection in Wireless Sensor Networks with Mobile Sink." *International Journal of Computer Science and Technology*, vol. 3(1), pp. 623-628, 2012.
- [15] Puthal, Deepak, and Bibhudatta Sahoo. "Secure Data Collection & Critical Data Transmission in Mobile Sink WSN: Secure and Energy efficient data collection technique." LAP Lambert Academic Publishing: Germany, 2012. ISBN: 978-3-659-16846-8.
- [16] Sahoo, B. P. S., and Satyajit Rath. "Integrating GPS, GSM and Cellular Phone for Location Tracking and Monitoring." *The 3rd International Conference on Geospatial Technology and Applications (Geomatrix'12)*. IIT Bombay, India, 2012.

AUTHOR PROFILES

B. P. S. Sahoo, received his M.Tech in Computer Science from Utkal University, Bhubaneswar, India in 2012. Currently he is a member of the WiCom Creative Labs, India and also associated with the National Central University, Taiwan. Prior to join this position he was working as a Research Associate at the Indian Institute of Technology Kanpur, India. His research interest includes Wireless Networks, Communication Protocol Design and Cloud Computing.

Deepak Puthal, received his M.Tech in Computer Science and Engineering (Specialization- Information Security) from NIT Rourkela, India. He was working as a faculty member at NIT Silchar, India. His research interest includes Wireless networks, Communication protocols and Information security.

<http://www.ejournalofscience.org>

Satyajit Rath, received his B. Tech from College of Engineering & Technology (OUAT), M.S. in Software Systems from BITS, Pilani, India in 1997 and 2002 respectively. He is now a Scientist at CSIR-Institute of Minerals and Materials Technology (IMMT), Bhubaneswar since April 2008. Prior to join this position he was working at Centre for Development of Advance

computing (C-DAC), Noida. He is leading software related project consultancy and ICT applied research in the allied field of Decision Support Expert system; Process Simulation and Modelling; Digital Image Analysis; Geomatics & Remote Sensing. His research interest includes Wireless Sensor Networks, Digital Image Analysis, and Network Security.